

# Census Data, the new geography and implications for Census outputs



Jill Charker  
First Assistant Statistician (a/g)  
PLIES

Australian Government Statistical Forum  
29<sup>th</sup> June 2011

# Agenda

- Why the change
- The new Australian Statistical Geography Standard (ASGS)
- Timeline of events
- Implications for Census Outputs

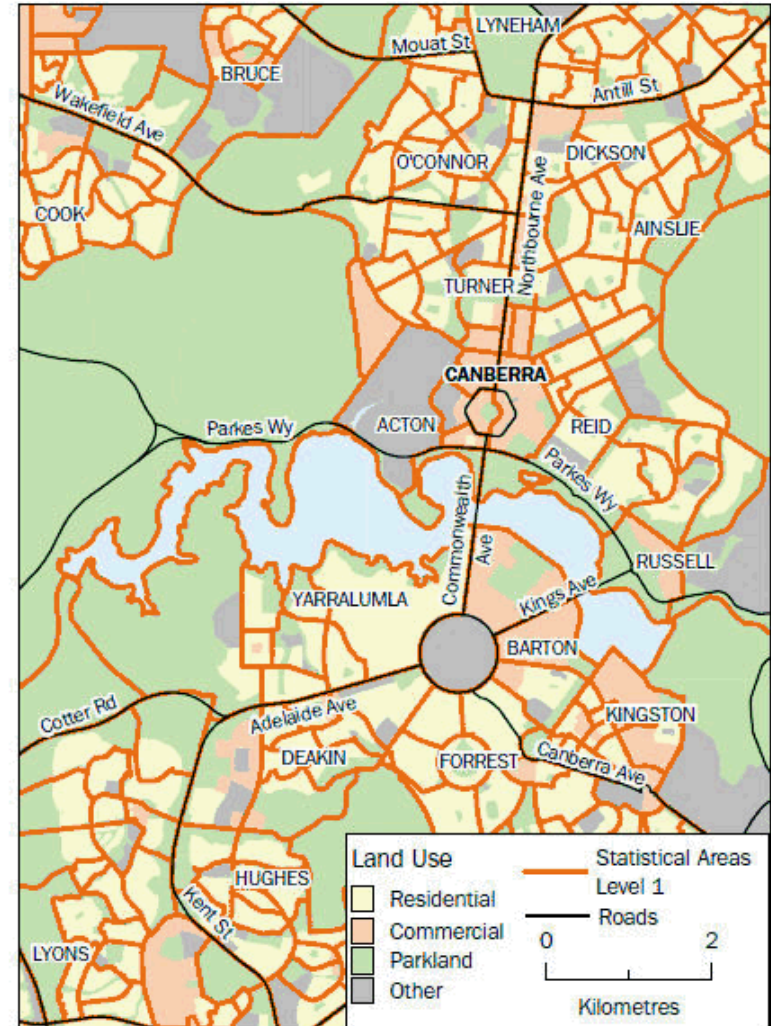
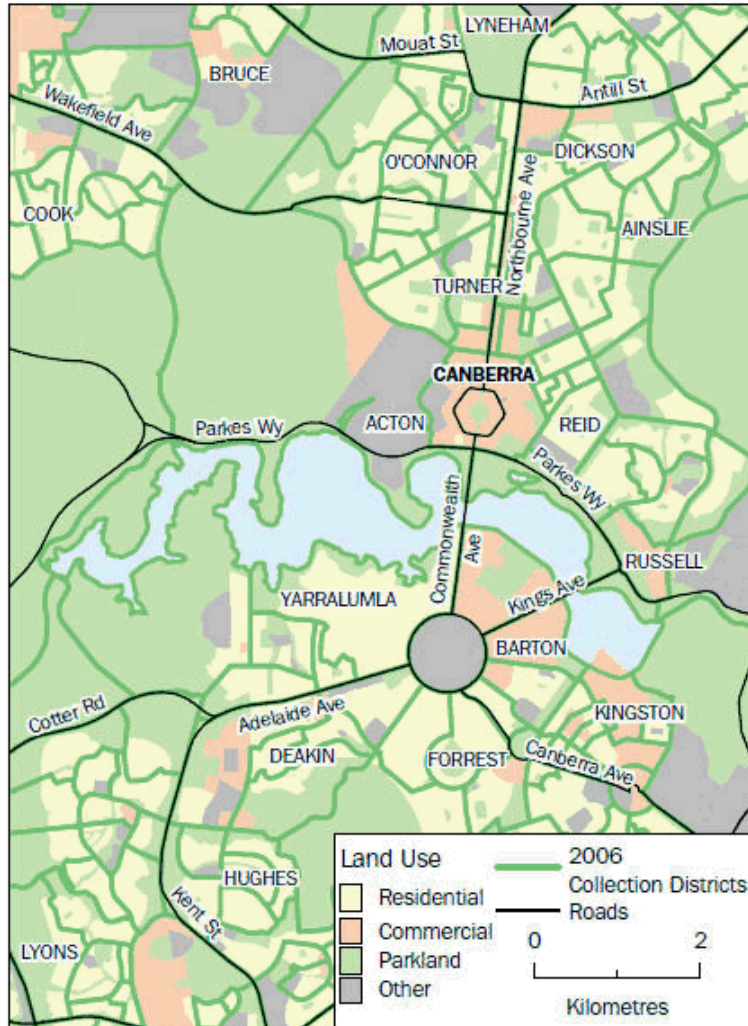
# Why the change - The Australian Statistical Geography Standard (ASGS)

- More stability in time series
- Based on functional areas
- Responding to the need to improve data quality and maintain a robust geography

The following diagram compares the main structures of both the new and old geographies, as well as the number of spatial units at each level

2011 Census (ASGS)	2006 Census (ASGC)
Australia (1)	Australia (1)
State/Territory (9)	State/Territory (9)
Statistical Area Level 4 (106)	Statistical Division (69)
Statistical Area Level 3 (351)	Statistical Subdivision (217)
Statistical Area Level 2 (2,214)	Statistical Local Area (1,426)
Statistical Area Level 1 (54,805) Mesh Blocks (347,627)	Collection District (38,704)

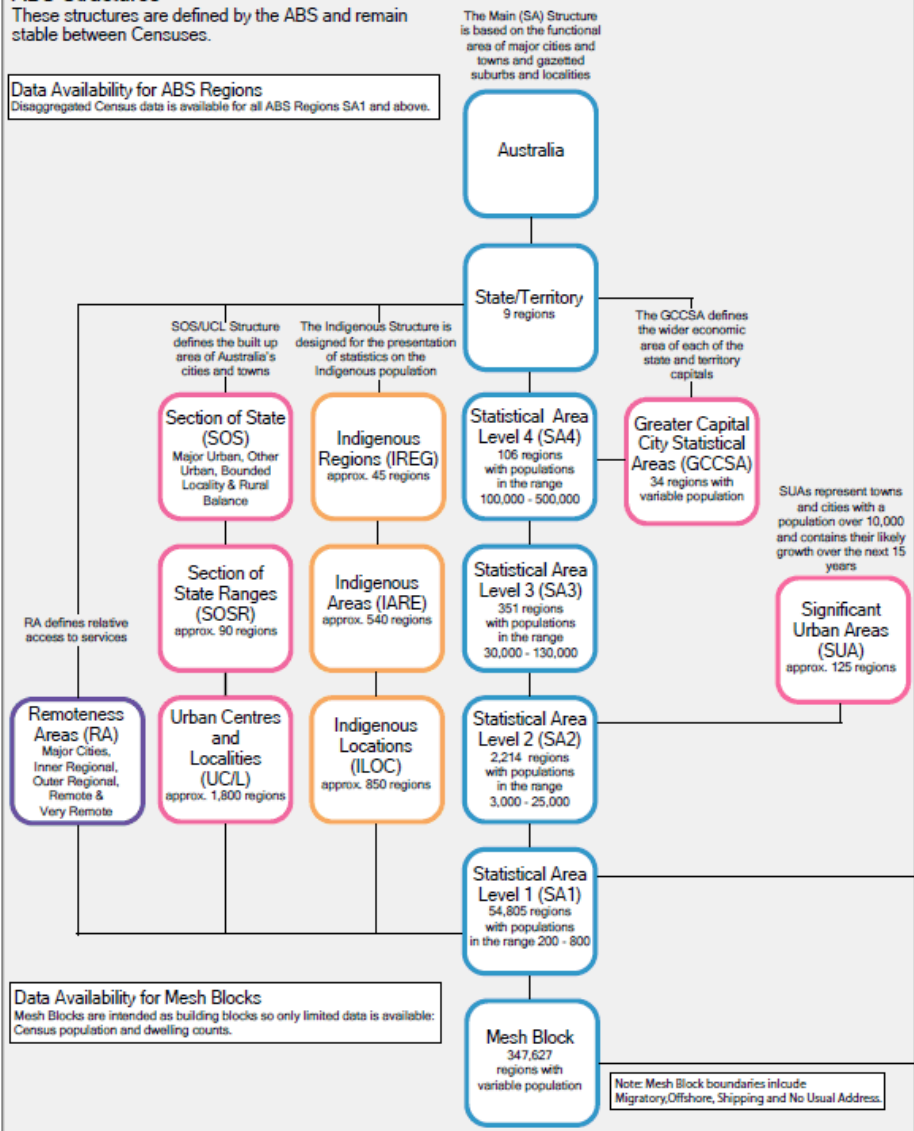
Maps of Central Canberra comparing 2006 Collection Districts and 2011 Statistical Areas.



**ABS Structures**

These structures are defined by the ABS and remain stable between Censuses.

**Data Availability for ABS Regions**  
Disaggregated Census data is available for all ABS Regions SA1 and above.

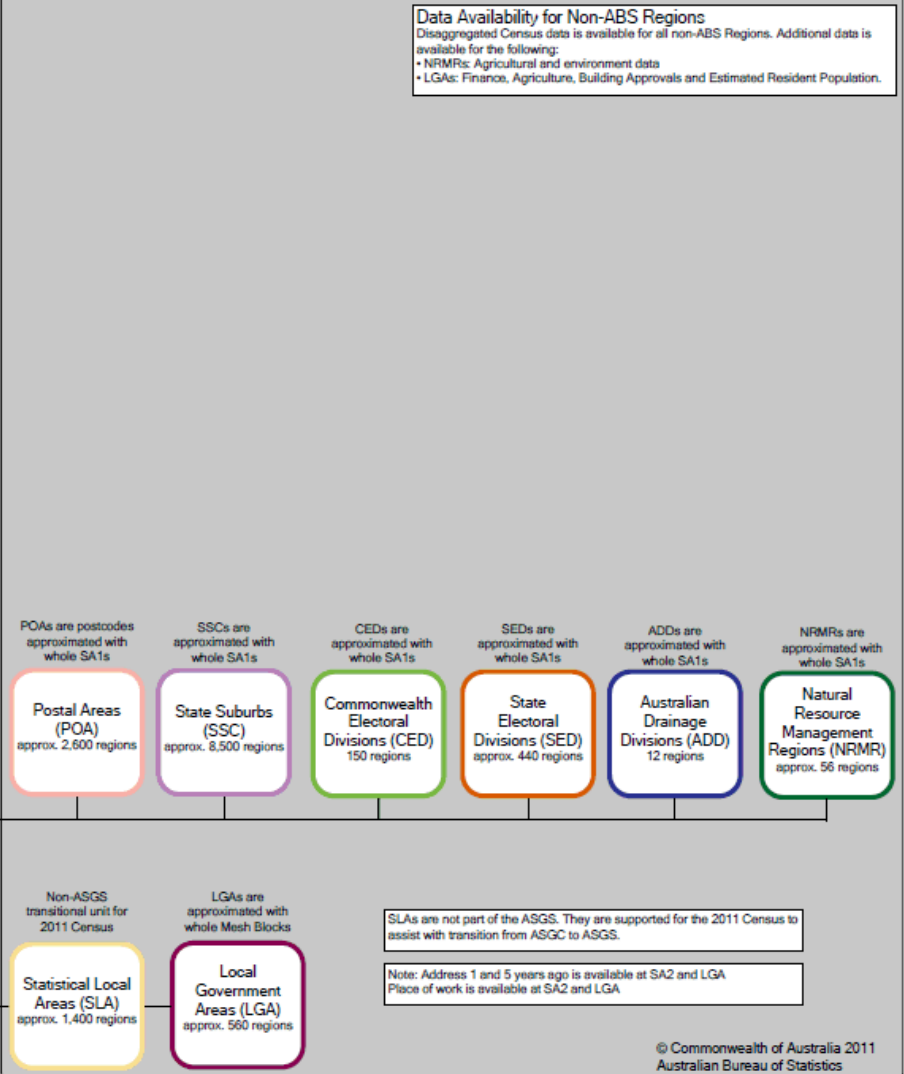


**Data Availability for Mesh Blocks**  
Mesh Blocks are intended as building blocks so only limited data is available: Census population and dwelling counts.

**Non - ABS Structures**

Structures not defined by the ABS. They are updated annually.

**Data Availability for Non-ABS Regions**  
Disaggregated Census data is available for all non-ABS Regions. Additional data is available for the following:  
• NRMRS: Agricultural and environment data  
• LGAs: Finance, Agriculture, Building Approvals and Estimated Resident Population.



# Timeline of events

## July 2008

ABS announces ASGC to be replaced

## Feb 2009 to Feb 2010

Initial invitation to consult on ASGS and Census data

## March 2010

Census release discussion paper informing users of Census data proposals around 2011 ASGS

## Feb 2011

Census release paper on discussion outcomes from the 2010 March paper including product range released for ASGS/ASGC areas



The road ahead.....

## 9 August 2011

Census Night

## By March 2012

Registration available  
Consultancy Advanced  
Ordering

## June 2012

First Results Out

## October 2012

Second Results Out

## Early 2013

Third Release



## Implications for Census Outputs

- The beginning of a new improved time series with greater stability, consistency and relevance
- The new ASGS will be available across our range of products
- New base unit of output is Statistical Area 1 (SA1)





## Implications for Census Outputs (cont.)

- Break in time series however Local Government Area (LGA) and Statistical Local Area (SLA) data will be available for 2011
- Time Series data for 2011 census will be available for Australia, States, Territories, 2011 SLAs and 2011 LGAs
- Improvements to data quality as well as meeting fundamental requirements of users of Census data

# Questions

