



Statistical Spatial Framework



Connecting people, policy and place: A Statistical Spatial Framework

Graeme Brown
Assistant Statistician
Demography, Regional & Social Analysis
May 2013 – AGSF



Statistical Spatial Framework

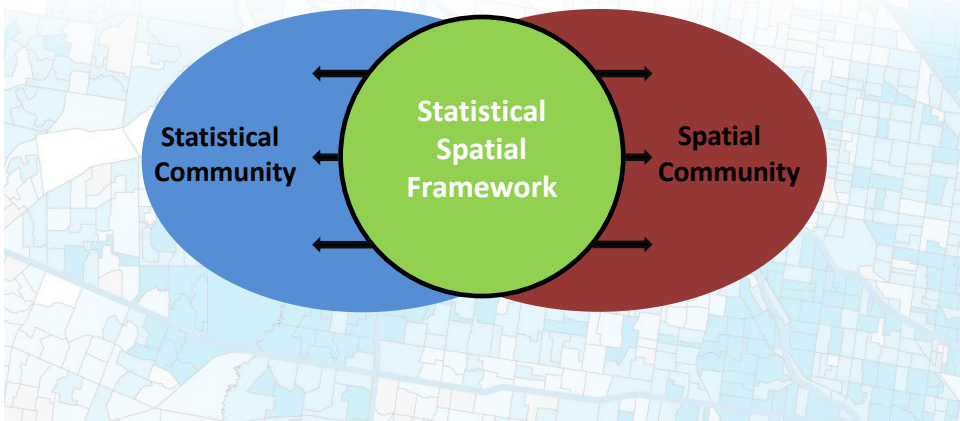
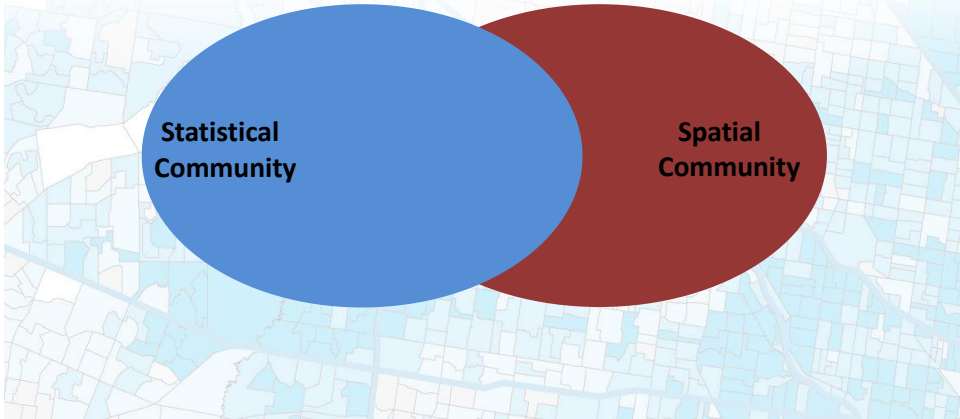


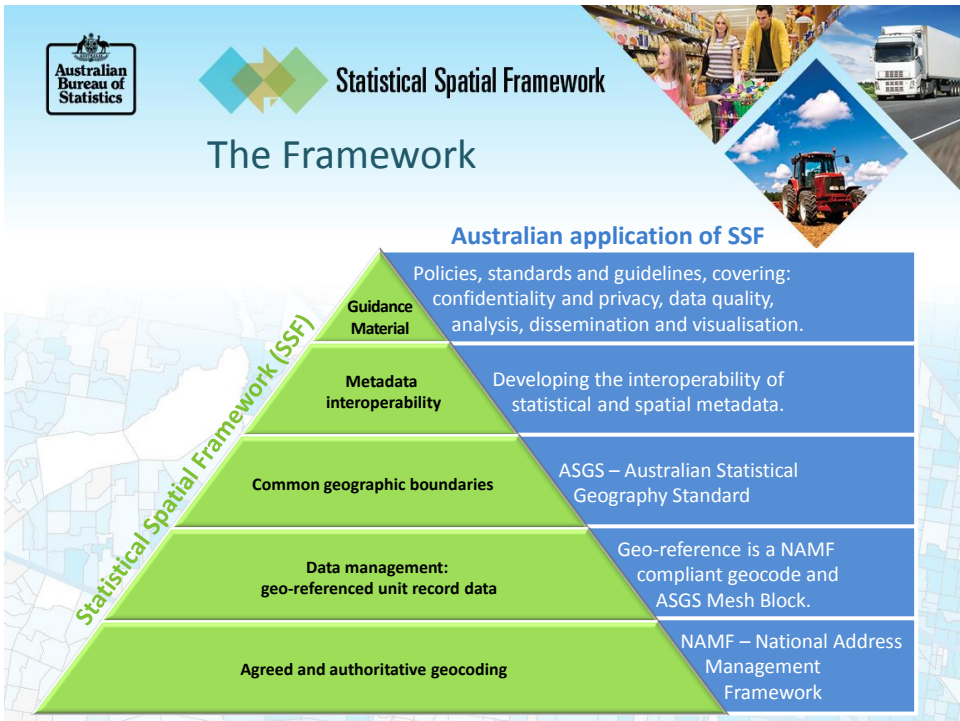
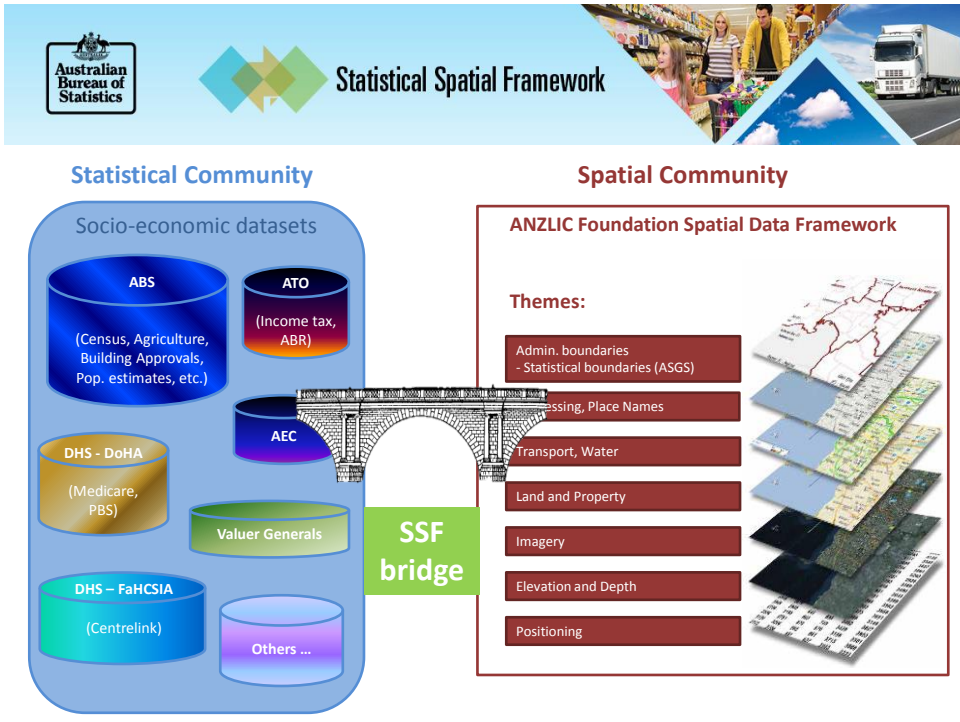
The challenge ...

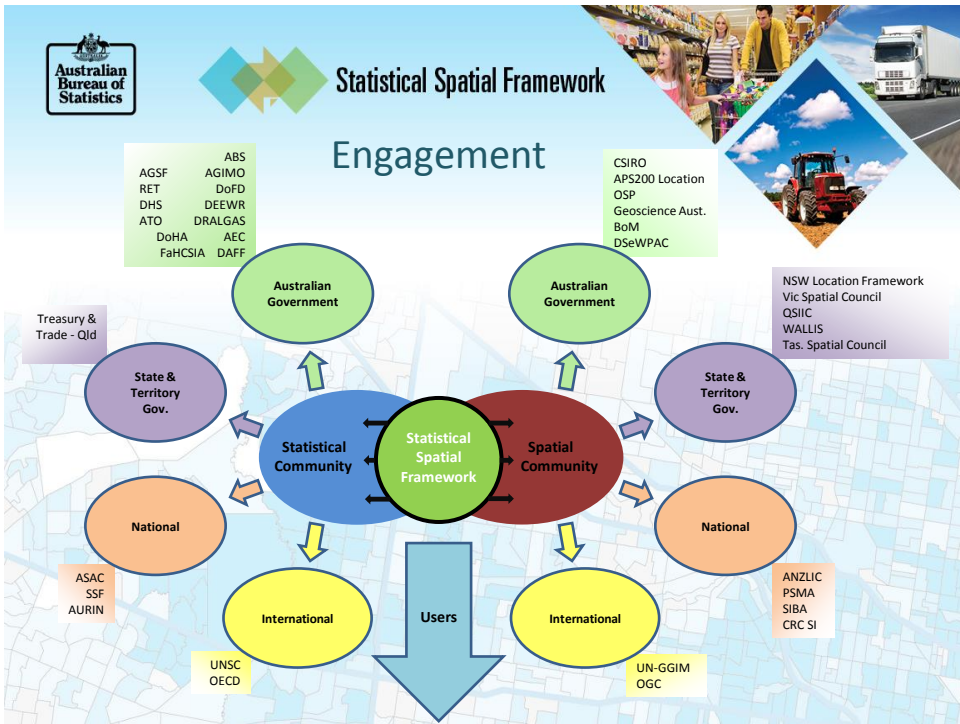
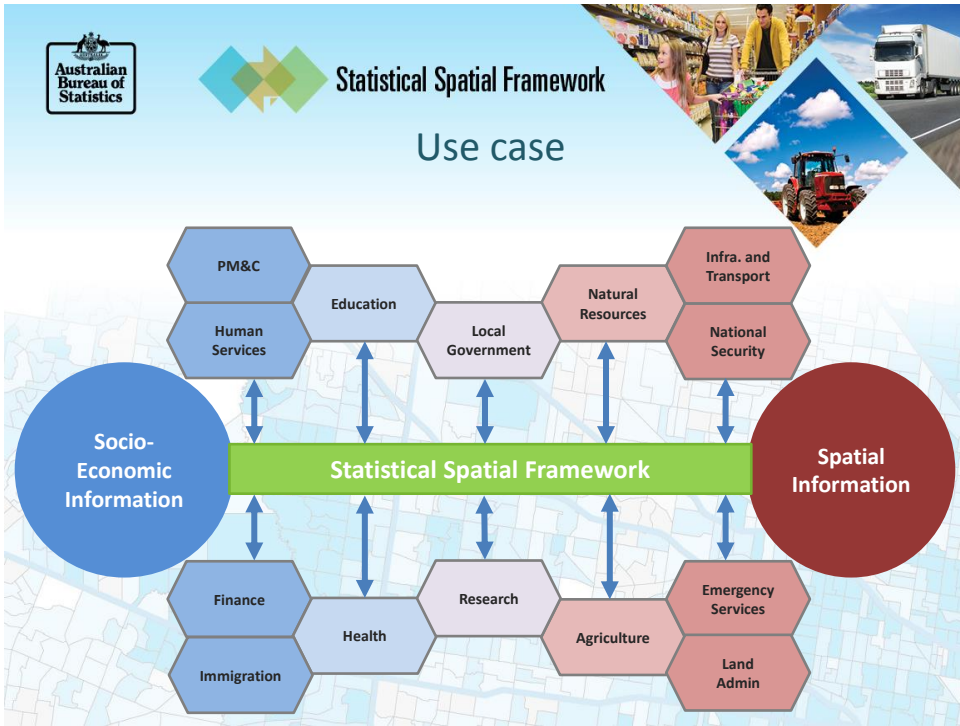
‘The work on global geospatial information management over the past two to three years has confirmed that one of the key challenges is a better integration of geospatial and statistical information as a basis for sound and evidence-based decision-making.’

Secretary General of the
UN Economic and Social Council, 2012.












Statistical Spatial Framework



The SSF will empower people and organisations to:

- improve planning for regional economies and communities
- better target service delivery and business activities at the local-area level
- engage in more informed community level decision making
- incorporate population, social, economic and environment data into current geospatial and business analysis.




**Statistical
Spatial
Framework**

For more information
 Visit: www.nss.gov.au
 E-mail: geography@abs.gov.au
graeme.brown@abs.gov.au