



National Centre for Longitudinal Data



NCLD: towards a systems approach to Longitudinal Data

David Dennis, Department of Social Services

Australian Government Statistical Forum Presentation
Canberra, October 2015



Before the National Centre for Longitudinal Data (NCLD)...

2

DSS: four main longitudinal surveys



Household, Income and Labour Dynamics in Australia (HILDA) Survey



Growing Up in Australia: The Longitudinal Study of Australian Children (LSAC)



Footprints in Time: The Longitudinal Study of Indigenous Children (LSIC)



Building a New Life in Australia: The Longitudinal Study of Humanitarian Migrants (BNLA)

Review of Australia's Longitudinal Data architecture



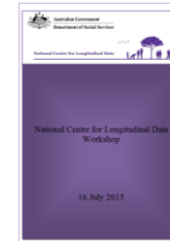
"undertake a review of the future longitudinal data necessary to support actuarial assessments"

Budget Paper No. 2, p. 162

Review of Australia's Longitudinal Data architecture

- develop a strategic plan for the Australian Government's longitudinal data architecture to support evidence-based policy
- promote a coordinated approach to longitudinal data, informed by government needs, academia and the private sector
- consider arrangements for longitudinal data integrity, development, analysis and dissemination
- consider balance of investment in administrative data and longitudinal surveys
- propose a framework prioritising Commonwealth investment in new and existing longitudinal survey and administrative data assets

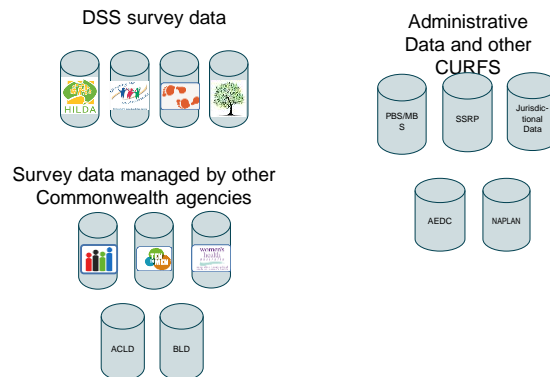
Workshop, July 2015



Key Outcomes

- Importance of coordinated approach to design and funding of longitudinal surveys
- Future should include set of core data sets
- Item harmonisation across data sets important including a small set of core items
- Administrative data sets should be the statistical spine for drawing samples.

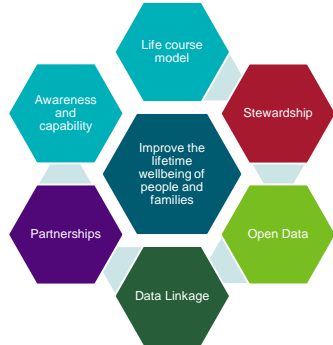
Fragmented data development



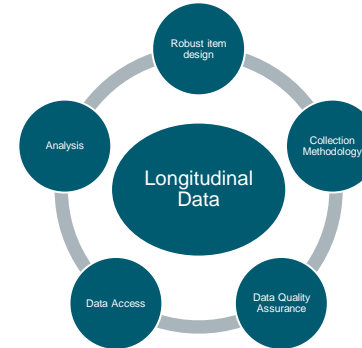
Issues

- Longitudinal survey datasets fragmented:
 - limited knowledge-sharing across studies
 - potential gaps and overlaps between studies
 - limited data harmonisation
 - studies vulnerable to Machinery of Government changes
- Limited integration of surveys with administrative data
- Longitudinal data now in fashion but costly and wasteful if data collections are developed in an ad-hoc way.

A systems approach to longitudinal data



NCLD: a more coordinated approach



Longitudinal Data Conference

- October 25-27, 2016
- National Convention Centre, Canberra
- Demonstrate power of longitudinal data for policy making
- Bring together longitudinal data analysts from across disciplines
- Demonstrate power of longitudinal data linkage
- Showcase methodologies for collection and retention

Contribute to improving the lifetime wellbeing of Australians through evidence



Website(s): www.dss.gov.au/nclcd

Research: <http://flosse.dss.gov.au>

Email: nclcd@dss.gov.au



Thank you

*David Dennis
Branch Manager
Policy Evidence Branch, DSS
david.dennis@dss.gov.au*